

A large, vibrant photograph of a wind farm is the background of the page. Several large, white wind turbines with three blades each are visible, standing on a lush green hill. The hill is covered in dense, green vegetation. In the background, more hills and mountains are visible under a clear blue sky with some light clouds. A winding road or path is visible on the lower right side of the hill. The image is split diagonally by a white line, with the top right corner being white and containing the logo and tagline.

COMPANY PROFILE

Together We Develop A Better Future

PT Gunung Raja Paksi Tbk



Message from President Director

“At Gunung Raja Paksi Tbk (GGRP), we always nurture the culture of continuous improvement through achievement and advancement in all fields of development.”



Thank you for choosing PT Gunung Raja Paksi Tbk (GRP) as your partner in providing reliable steel solutions. Your trust motivates us to continuously improve and serve with integrity.

At GRP, we are committed to ongoing progress and long-term value creation through responsible operations and collaborative partnerships.

With over five decades of experience in steel manufacturing, we continue to support national development by delivering products that meet the evolving needs of our customers and stakeholders. As part of the Gunung Steel Group, we uphold a tradition of transparency, accountability, and professionalism in everything we do.

We recognize the importance of operating responsibly and sustainably. Guided by our ESG Strategy and long-term roadmap, we are gradually strengthening our environmental and social contributions in line with evolving industry expectations and stakeholder needs.

Our journey is shaped by the dedication of our people, our partners, and our shared commitment to progress. Through learning, innovation, and strong collaboration, we aim to grow sustainably while contributing positively to the community and the environment.

“Shaping Tomorrow” reflects our aspiration to build a better future—together.

Warm regards,

Siti Humayah
President Director
PT Gunung Raja Paksi Tbk

About Us

Production Capacity

1,2^{00,000}
tons of steel annually

PT Gunung Raja Paksi Tbk is a member of Gunung Steel Group, one of the largest private steel companies in Indonesia.

PT Gunung Raja Paksi Tbk (GRP) is a member of Gunung Steel Group, one of the largest private steel companies in Indonesia. Established in 1970 in Medan, North Sumatra, our company started the business by producing hot steel, gradually producing beams and steel sheets.

In 1991, PT Gunung Naga Mas transitioned to PT Gunung Raja Paksi (GRP). GRP is located in Cikarang Barat, West Java Province, Indonesia, covering more than 150 hectares. With more than 50 years of experience in the steel industry, we produce 1,200,000 tons of high quality steel annually certified by local and international certification organizations.

Today, our company has become one of the largest private steel companies in Indonesia.

Gunung Raja Paksi, "Shaping Tomorrow".
Together we develop a better future.

Our Vision

Establish PT Gunung Raja Paksi Tbk as the most competitive and become valuable benchmark for large private steel company in Indonesia.

Our Mission

To ensure stakeholders and customers satisfaction through Innovation, Efficiency, Productivity, Quality Products and Services as well as company social responsibility to enable company sustainability.

Member of



Global Market

As one of the largest steel producers in Indonesia with the widest product range makes a good reputation for GRP among global industrial companies. The ability of GRP has been proven by international market customers satisfaction for its quality products.



Asia

Cambodia
Japan
Malaysia
Papua New Guinea
Philippines
Singapore
South Korea
Taiwan
Thailand
Timor Leste
Vietnam

Australia

Australia
New Zealand

South Asia

Bangladesh
India
Pakistan
Sri Lanka

Africa

Kenya
Mauritius
Reunion
Uganda

Middle East

Saudi Arabia
United Arab Emirate

America

Brazil
Canada
USA

Europe

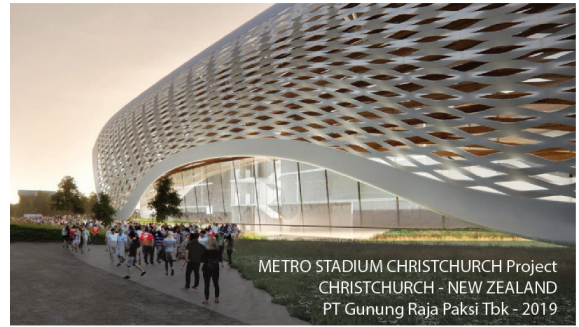
Benelux (Belgium,
Netherlands,
Luxemburg)
England
France
Germany
Italy
Portugal
Spain



LAX CONRAC Project
LOS ANGELES, CALIFORNIA, USA
PT Gunung Raja Paksi Tbk - 2020



SYDNEY STADIUM PROJECT
SYDNEY, NEW SOUTH WALES - AUSTRALIA
PT Gunung Raja Paksi Tbk - 2020



METRO STADIUM CHRISTCHURCH Project
CHRISTCHURCH - NEW ZEALAND
PT Gunung Raja Paksi Tbk - 2019



UNIVERSITY OF AUCKLAND BUILDING 507 Project
AUCKLAND - NEW ZEALAND
PT Gunung Raja Paksi Tbk - 2018



XAYABURI HYDROELECTRIC POWER Project
XAYABURI - LAOS
PT Gunung Raja Paksi Tbk - 2016



BRIDGESTONE Project
PORT HEDLAND, WESTERN AUSTRALIA - AUSTRALIA
PT Gunung Raja Paksi Tbk - 2017



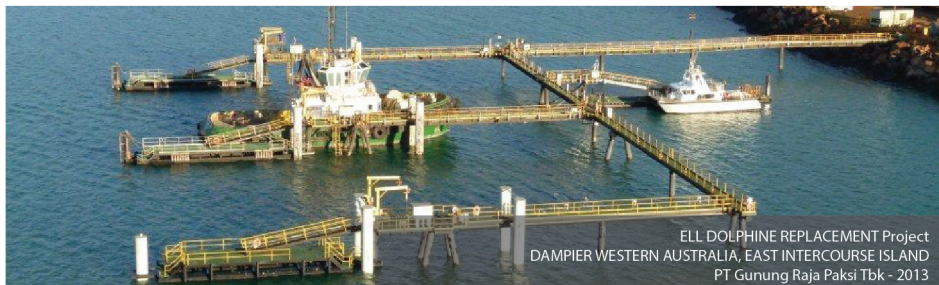
SYLVIA PARK SEM BUILDING Project
AUCKLAND - NEW ZEALAND
PT Gunung Raja Paksi Tbk - 2018



V PARRAMATTA Project
PARRAMATTA, NEW SOUTH WALES - AUSTRALIA
PT Gunung Raja Paksi Tbk - 2017



V PARRAMATTA Project
PARRAMATTA, NEW SOUTH WALES - AUSTRALIA
PT Gunung Raja Paksi Tbk - 2017



ELL DOLPHINE REPLACEMENT Project
DAMPIER WESTERN AUSTRALIA, EAST INTERCOURSE ISLAND
PT Gunung Raja Paksi Tbk - 2013



JIMAH EAST POWER Project
PORT DICKSON, NEGERI SEMBILAN - MALAYSIA
PT Gunung Raja Paksi Tbk - 2016



BRIDGESTONE Project
PORT HEDLAND, WESTERN AUSTRALIA - AUSTRALIA
PT Gunung Raja Paksi Tbk - 2017

GRP Products

The company is excited that the high demand of steel materials especially in oil and gas industry will bring us to continue expand and to have ability to offer new specification with high quality materials for our customers.



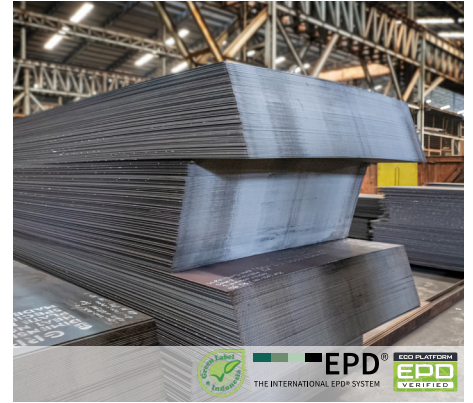
FLAT PRODUCT



STEEL PLATE



HOT ROLL COIL (HRC)



COIL PLATE

DOWNSTREAM PRODUCT



COLD ROLL COIL (CRC)



CUT TO SHAPE



ERW PIPE



SPIRAL PIPE



LIPPED CHANNEL

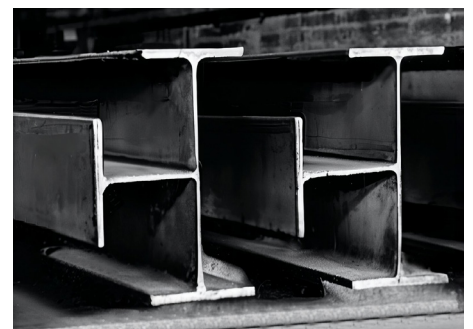
CUSTOMIZE PRODUCT



WELDED BEAM (CUSTOMIZE PRODUCT)



KING CROSS (CUSTOMIZE PRODUCT)



QUEEN CROSS (CUSTOMIZE PRODUCT)



HONEYCOMB (CUSTOMIZE PRODUCT)



CELL FORM (CUSTOMIZE PRODUCT)



T-BEAM (CUSTOMIZE PRODUCT)

GRP Services



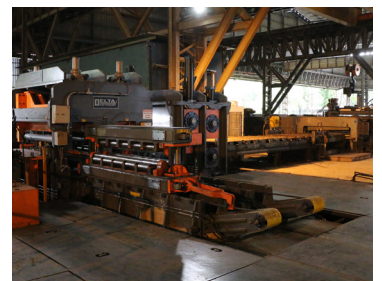
Coil Service Center (CSC)

Available Products:

Custom Fabrication
Hot Rolled Coil
Coil Plate

Service Provided:

Leveling - Cut to Length	
Maximum Coil Mass	25 Ton
Minimum Entry Width	1200 mm
Maximum Entry Width	1524 mm
Maximum Thickness	12 mm
Maximum Cut Length	12 M



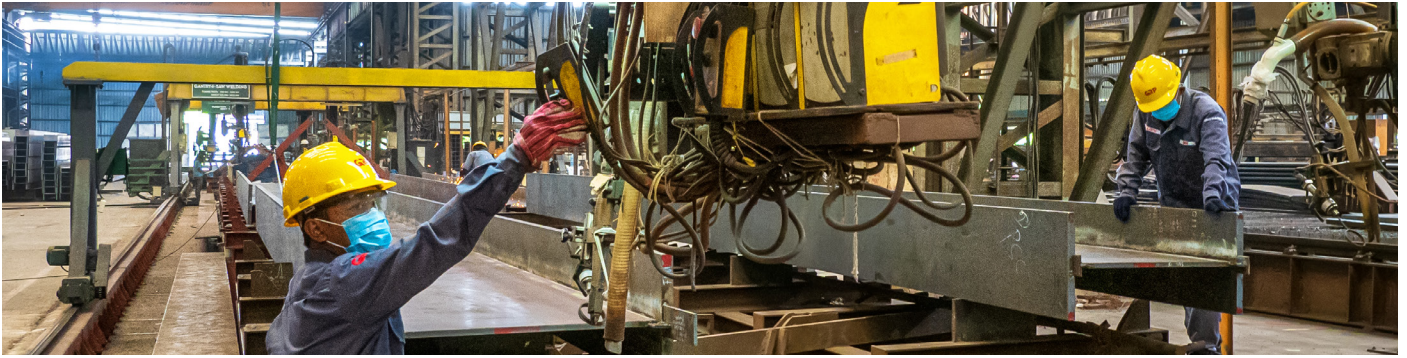


Plate Service Center (PSC)

Available Products:

- Hot Rolled Steel Plate
- C-Channel
- Equal Angle
- Cut to Shape
- Bridge Deck
- Caping/Flashing/Trim
- Floor Deck



Service Provided:

Cut to Shape

Plate Line : Bending, Drilling, Punching, Shearing, Stamping.



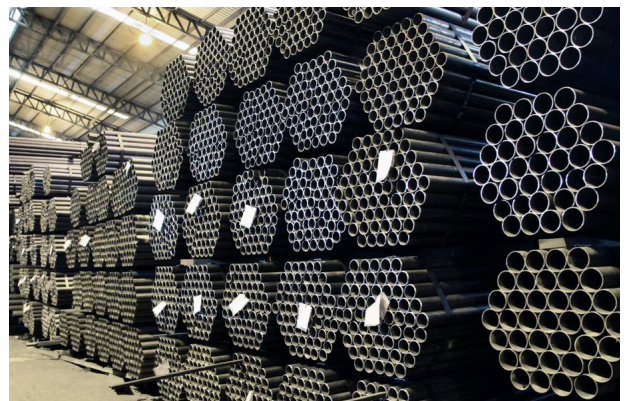
Forming Service Center (FSC)

Available Products:

- Lipped Channel
- ERW Pipes
- Rectangular Hollow Section
- Expanded Mesh
- Square Hollow Section

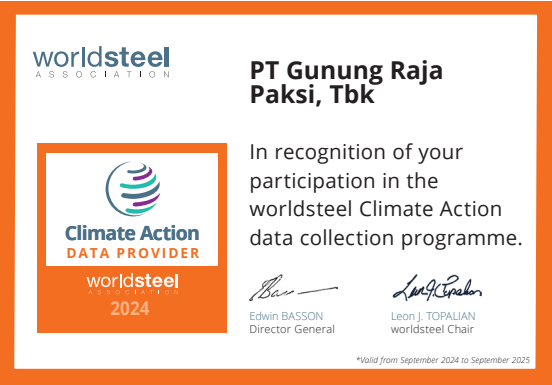
Service Provided:

- Beveling
- Cut to Length
- Drilling
- Forming
- Punching & Stamping



Proof of Gunung Raja Paksi (GRP) as one of the leading companies in Asia

GRP is very concerned about the quality of products and management system. This is evident from the many international certifications obtained such as ISO 9001:2015, ISO 14001:2015, ISO 45001:2018, ABS (American Bureau of Shipping), ACSR (Australasian Certification Reinforcing and Structural Steel) AISC (American Institute of Steel Construction), BSI (British Standards Institution), IIW (International Institute of Welding) KAN (Komite Akreditasi Nasional), LR (Lloyd’s Register), JIS Marking, SIRIM (Standard and Industrial Research Institute of Malaysia) & SNI (Standar Nasional Indonesia).



WORLD STEEL ASSOCIATION

Climate Action Member Periode 2020-2026, In Recognition of your Participation in the world steel CO2 data collection programme



KOMITE AKREDITASI NASIONAL (KAN)

Accreditation Certificate No: SNI ISO/IEC 17025:2017, Product Of Service: General Requirements for the Competence of Testing Laboratories and Calibration Laboratories

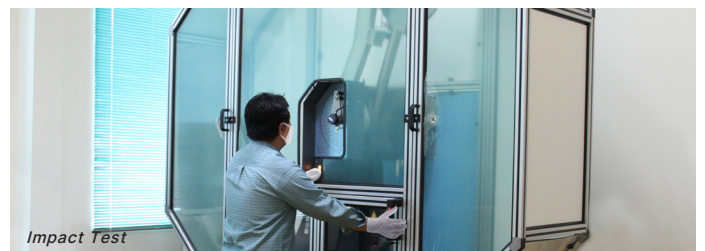
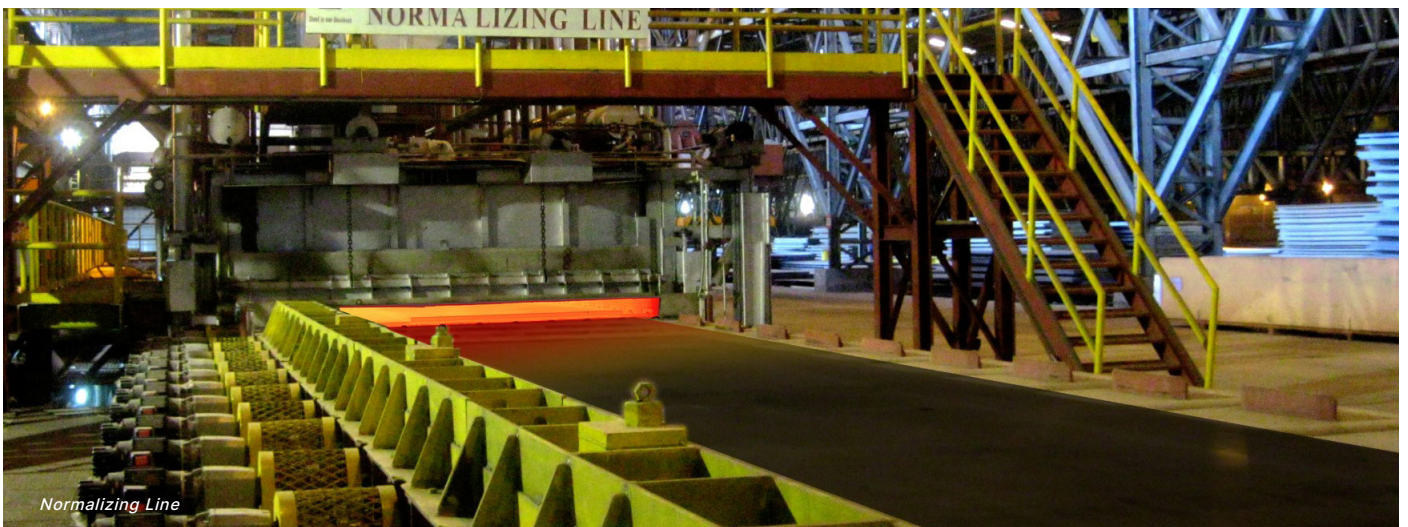


Facilities

Facilities and Premises



Machinery and Technology



Corporate Social Responsibility (CSR)

GRP is highly committed to improving the people's welfare by implementing various programs that are expected to improve the quality of life for the community, especially the people of Indonesia.

Our CSR is not just limited to the development and improvement of the human society in general, but also exercising good corporate governance which includes customer awareness, human resource development, green environment development and support in community development and social environment, achieving the ISO 26000 for the company.

GSG has 5 main pillars of corporate social responsibility (CSR) :

- **Building Human Capital,**
Creating internally reliable human resources, while externally building community empowerment.
- **Strengthening Surrounding Local Economies,**
Companies exist not just to benefit themselves, but also to benefit the surrounding economy.
- **Maintaining Social Harmony,**
Efforts to maintain harmony with the surrounding community so as not to cause conflict.
- **Encouraging Good Governance,**
Companies must refer to Good Corporate Governance (GCG) for the business well-being.
- **Protecting the Environment,**
Companies must strive to maintain environmental sustainability.



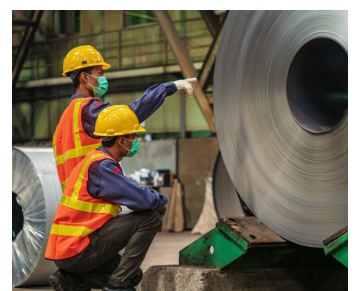
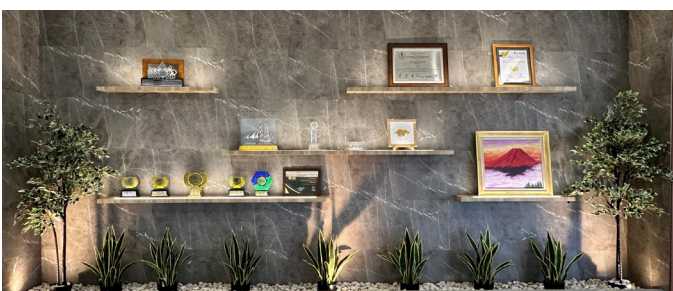
Sustainable Growth

As one of the largest steel producers in Indonesia with more than 278 million population, GRP continues to sustainable growth in all areas. Until now, there are more than 1000 qualified employees who have undergone rigorous training, helping GSG achieve corporate success in Indonesia.

As consumer demand grows in the 4th most populated country in the world, GRP is relentlessly developing new innovations and quality products that are in demand in the domestic and foreign market. As a matter of fact, all GRP facilities are equipped with the latest technology to produce steel products in large quantities and shorter time to meet increasing market demand.

By now, GRP has achieved production capacity of around 1.2 million tons per year. In the coming years, GRP will continue to grow and ensure the fulfillment of the need for high quality steel products.

The development of good facilities will be key to achieving GRP success. GRP has plans to build new factories, reliable transportation modes, and office apartments around the factory area as part of our efforts to improve the quality and well-being of our companies and employees, creating economies of scale and contributing to the development of Indonesia.

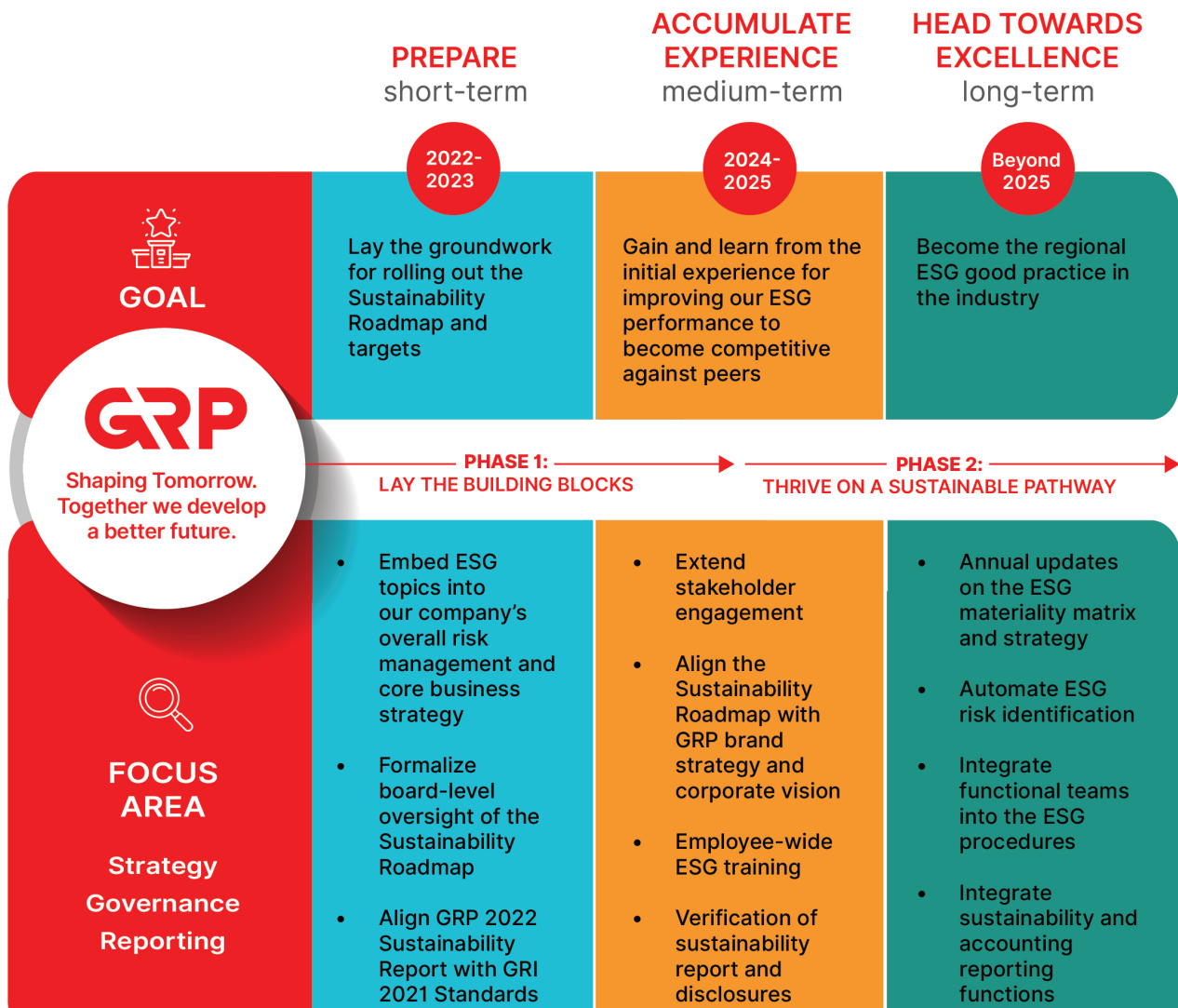
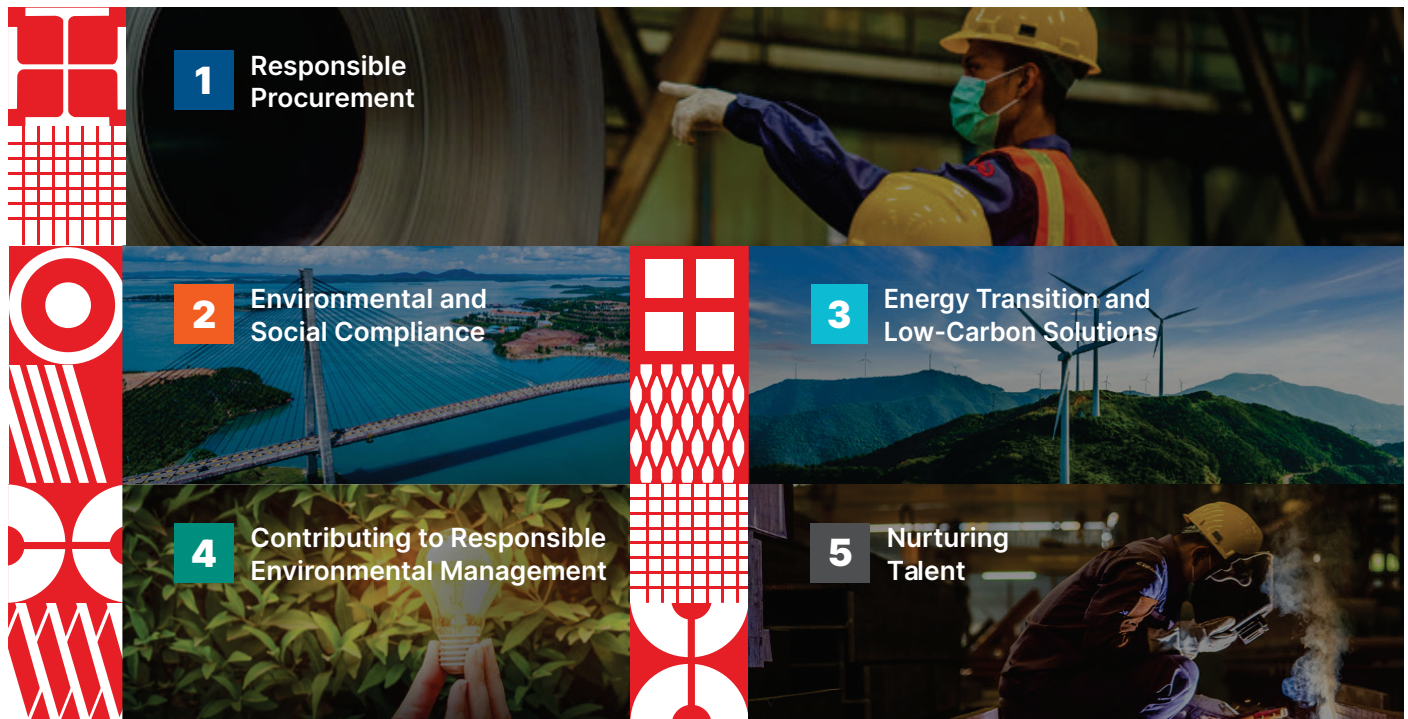




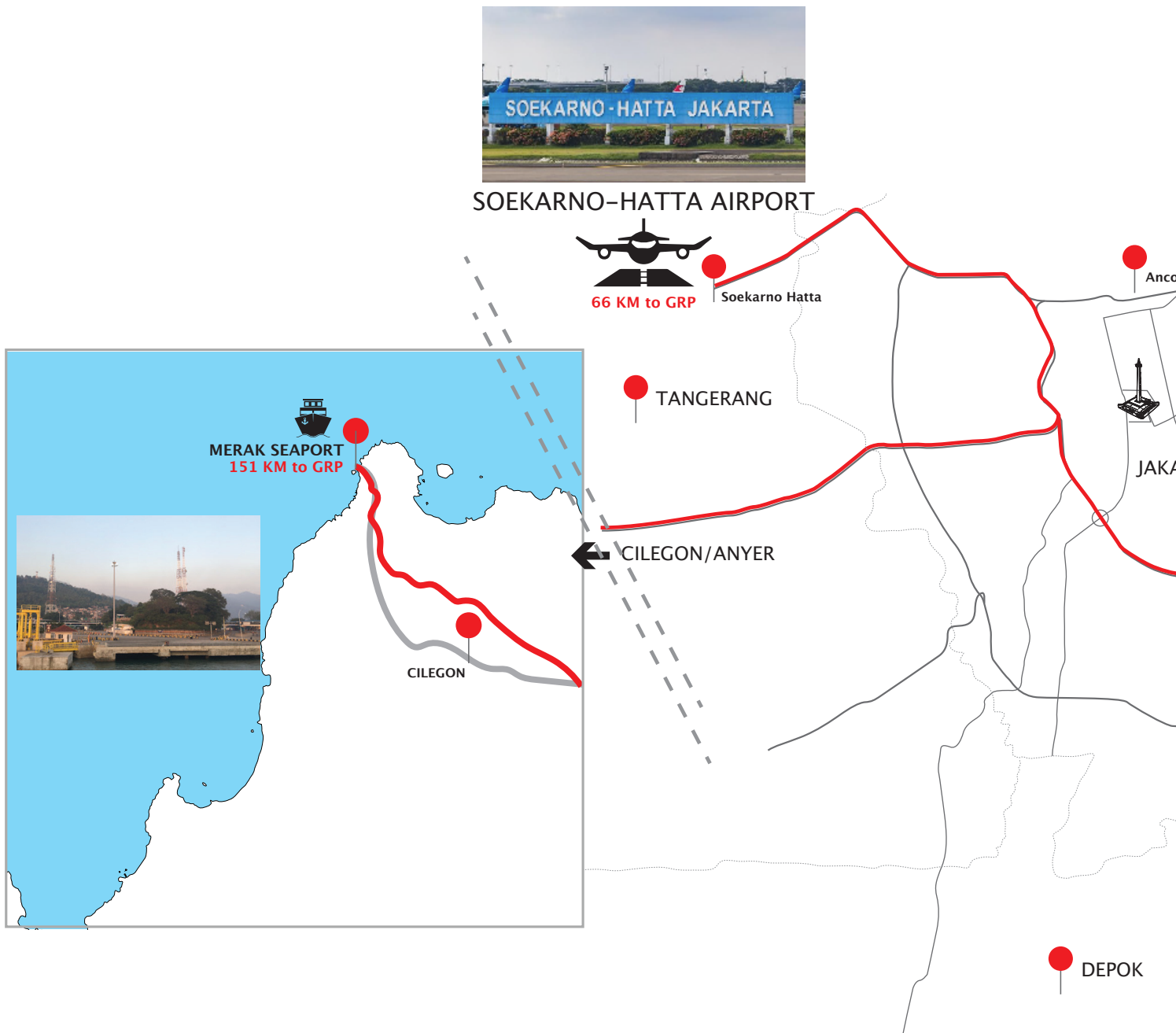


ENVIRONMENT, SOCIAL, GOVERNANCE (ESG)

The Five Pillars of GRP's Sustainability Framework



**GRP is located in Cikarang Barat,
West Java Province, Indonesia,
Covering more than 150 hectares**

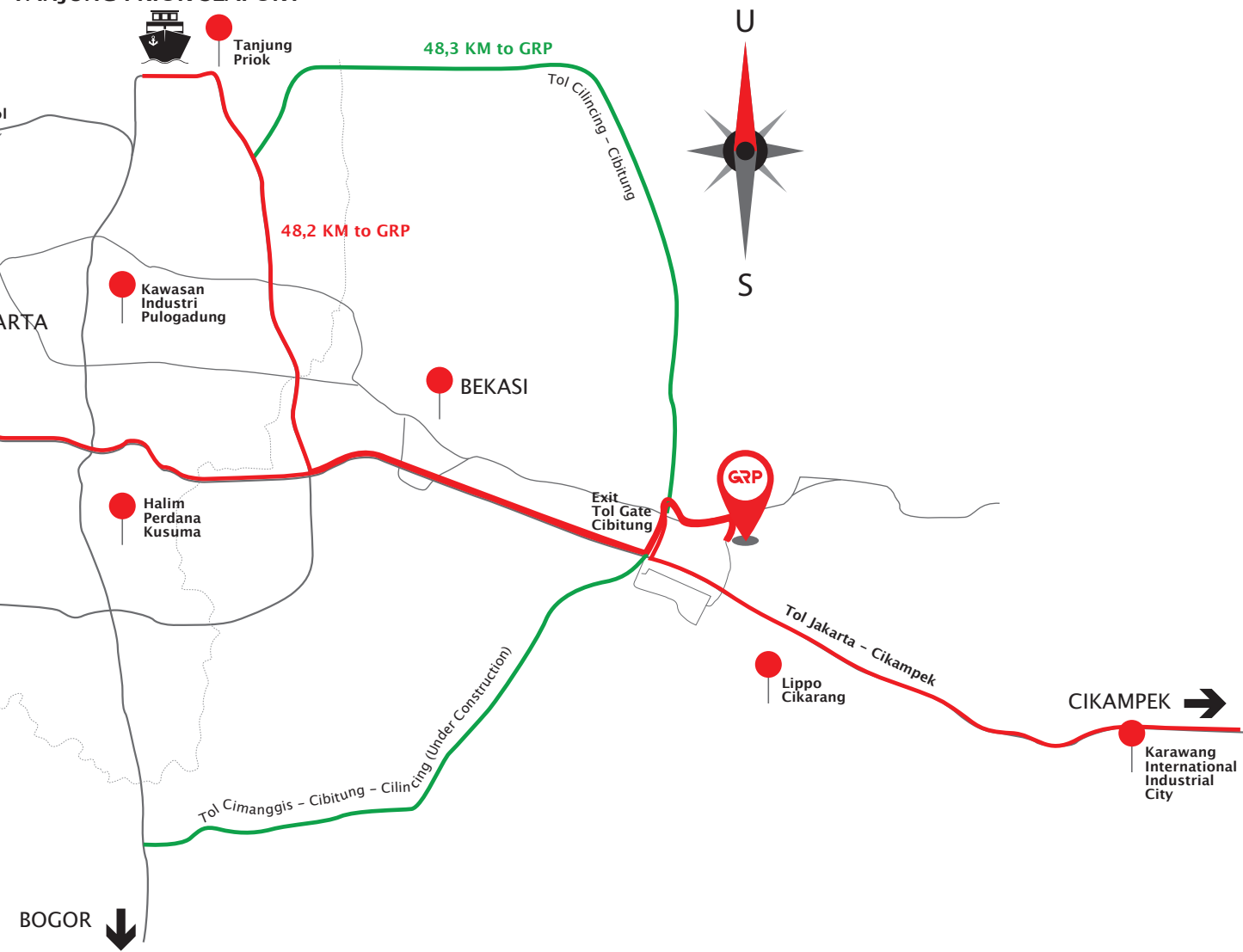


GRP has a superior strategic position; it can directly access several locations:

1. GRP to Telaga Asih Toll Gate: 3.3 KM
2. GRP to Tanjung Priok (Seaport): 48 KM
3. GRP to Soekarno-Hatta (Airport): 66 KM
4. GRP to Jagorawi Toll Road: 39.5 KM
5. GRP to Merak (Seaport): 151 KM



TANJUNG PRIOK SEAPORT



PT Gunung Raja Paksi Tbk

HEAD OFFICE & FACTORY

Jl. Perjuangan No. 15
Sukadanau, Cikarang Barat
Bekasi 17530
West Java, INDONESIA

Phone : +62 21 890-0111

Fax : +62 21 890-0555

Email : gsg@gunungsteel.com

 [gunung raja paksi](#)

 [@gunungrajapaksi](#)

 [@gunungrajapaksi.tbk](#)

 [@gunungrajapaksi](#)

 www.gunungrajapaksi.com